

# DASHBOARD

emGovPower LLC

## EMPOWERING THE PARTNERSHIP OF GOVERNMENT AND CITIZENS

### Overview

**emGovPower** is pleased to introduce a new tool for Governmental Management aimed at department heads, senior managers, and officials. The Dashboard module provides a flexible means of viewing status of any information, in any database within your organization (not just our databases) in a format (chart or table) that is easily understood, immediately available, fully up-to-date, and flexibly arranged to meet the users needs.

### Differentiating Functionality

- Operates against any database within your computer system. Operates against Access product databases, .NET product databases and other vendor's databases. See Performance Measurement application.
- Easily configured to display appropriate management information for each user, in the user defined format and location
- Always up-to-date because information is obtained from live databases on a regularly timed basis
- Multiple chart formats and table format of information presents each data segment appropriately
- Tied to Thresholds to easily monitor exceptional performance, good performance, and poor performance
- Format and content easily changed to meet changing individual needs

### Business Benefits

- Managers can access large amounts of data to quickly spot issues and problems— Confirm conformance to Council or Citizen directives.
- Ties all information from multiple sources together in one place
- Established without technical assistance (Local definitions)

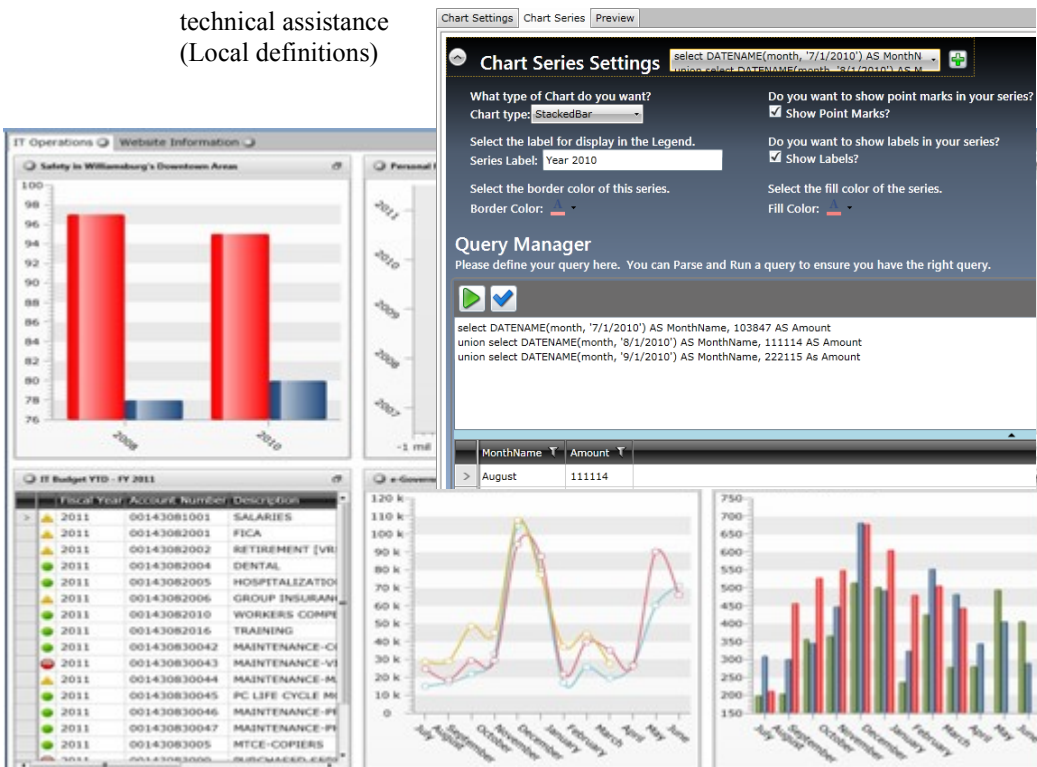


DASHBOARD



Software designed with  
the user in mind

→ Call us for additional  
information



emGovPower LLC

PO Box 1299  
Matthews, NC 28106

Phone: 704-849-8242 x202

Fax: 704-846-9440

E-mail: [ernie@emgovpower.com](mailto:ernie@emgovpower.com)



emGovPower